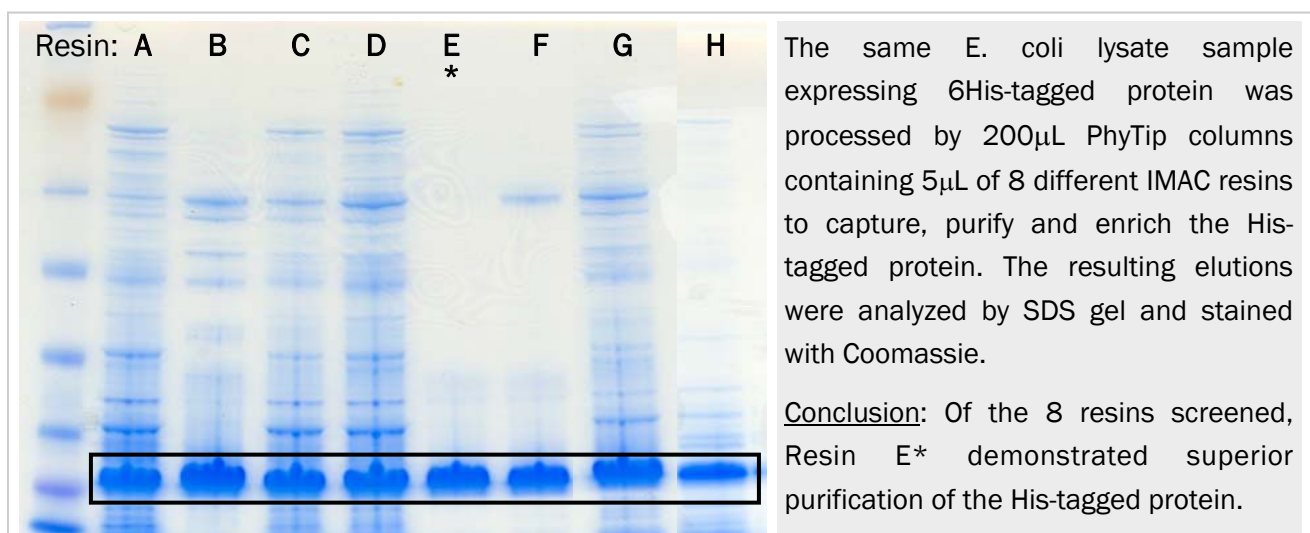


PhyScreen Ni-IMAC Resin Screening Toolkit

Protein purification performance can vary depending on the protein analyzed and the affinity resin utilized. Researchers often need to settle for the best results obtained from a few available purification options. PhyNexus has developed the unique PhyTip® column technology for the small scale affinity purification of engineered proteins and antibodies, which is a powerful and efficient method for generating pure, functional protein. One of the benefits of a high throughput small-scale purification method is the ability to easily and quickly screen many purification options simultaneously. PhyNexus has made this even easier with the availability of the PhyScreen Ni-IMAC screen kit which includes columns of twelve different Ni-IMAC resins, prepared for ease of use with the MEA automated system, or other commercially available liquid handlers. Resin screening is especially valuable when affinity purifying His-tagged recombinant proteins due to the high propensity of background interactions between Ni-IMAC and naturally occurring multiple His residues.

- Need a fast answer? Purify small volumes quickly and run 12 resins in parallel.
- Scaling up? Optimize easily for the best resin.
- Variable buffer conditions? Screen to optimize capture, wash and elution buffer conditions while screening for the best resin.
- Packing resins manually? Automatable pre-made kit.
- Require finishing columns? Eliminate the sample and time loss associated with running extra gel filtration and ion exchange following purification.

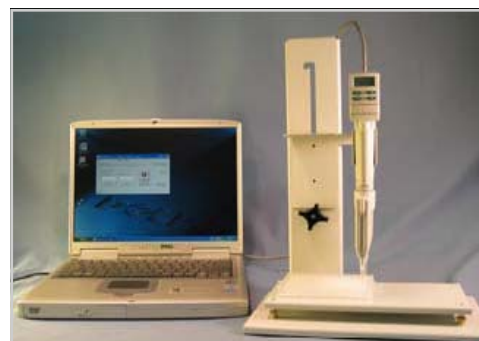


PhyScreen Ni-IMAC Resin Screening Toolkit

PhyTip columns are specifically manufactured for the automated MEA bench top, walk-away system.



PhyTip columns can also be used with the ME 200 and ME 1000 semi-automated purification systems.



The PhyScreen kit includes 200 μ L columns with 5 μ L of the following IMAC resins:

- HIS-Select[®] HF Ni Affinity Gel
- Ni Sepharose[™] 6 FF
- Nugel[™] Ni
- Ni Chelating Superflow
- Procatch His resin
- Ni-IDA Resin
- PrepEase[®] High Specificity
- PrepEase[®] High Yield
- His-Catch[™] Metal Chelating Cellulose
- Ni-NTA His-Bind[®] Resin
- Ni-NTA His-Bind[®] Superflow
- HisPur Cobalt Resin

Resins not included in this list may also be substituted as a custom order.

PhyScreen Part Numbers:

PTR 92-05-NS
PTB 92-05-NS
PTT 92-05-NS
PTP 92-05-NS
PTZ 92-05-NS

Automated System compatibility:

ME or MEA systems, standard Rainin LTS tips
Beckman FX Series
Tecan Temo
Packard P235 tips
Caliper Sciclone